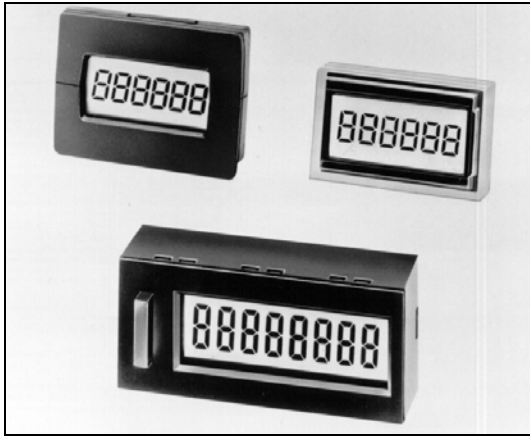


MicroCount Series



FEATURES:

- Miniature pre-designed totalizer for OEMs
- High contrast LCD display
- Low power consumption ideal for long life battery powered applications
- Can be directly mounted to a PC board
- Count speeds up to 10k Hz
- UL and CSA listed
- RoHS (upon request) & CE Compliant

APPLICATIONS:

- Amusement Machines
- Copiers and Printers
- Dispensing Machines
- Portable Equipment
- Ticket Machines
- Utility Meters
- Applications: For use without a power source

DESCRIPTION:

The **MicroCount I & I/AS** are 6 digit counters that can be panel or PCB mounted (a black panel mount bezel is included). They are housed in clear, polycarbonate, plastic

and connections are made by five pins. The **MicroCount I** is a totalizing counter and the **I/AS** is an add/subtract counter.

The **MicroCount II** is an 8 digit, totalizing, add/subtract counter that can be surface or PCB mounted. Two versions are available: the "IIR" with front push button reset or the "II" without push button reset. The counter is housed in black, polystyrene, plastic and connections are made by six pins.

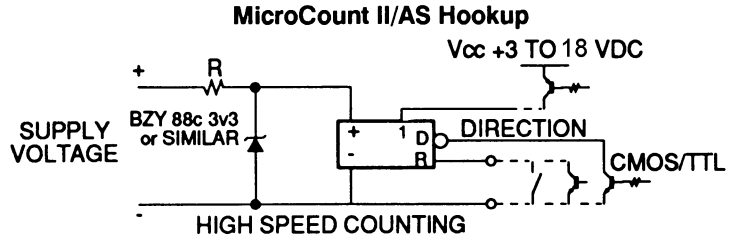
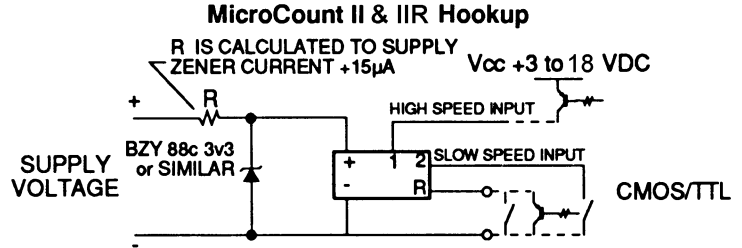
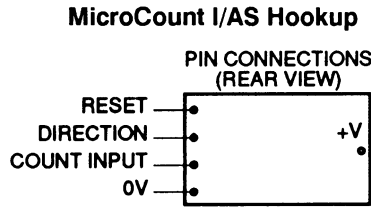
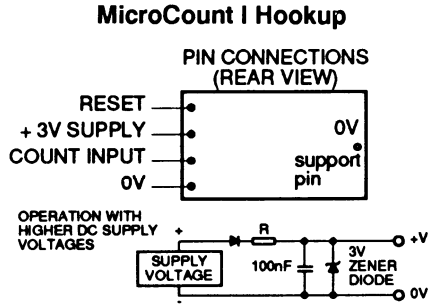
The **MicroCount V** is a 6 digit battery powered totalizing counters. It has leads for remote contact and increments on contact open. A black panel mount bezel is included.

SPECIFICATIONS:

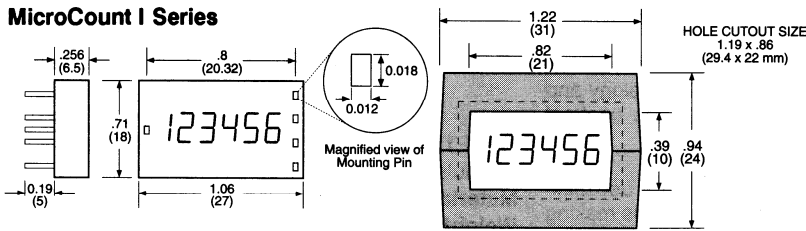
| Model | MicroCount I MicroCount I/AS | MicroCount II MicroCount IIR | MicroCount V |
|----------------|--|--|---|
| Function | Totalizer /AS = add/subtract | Totalizer add/subtract | Totalizer |
| Display | 6 digit, high contrast LCD, 6mm (0.2") characters | 8 digit, high contrast LCD, 8mm(0.315") characters | 6 digit, LCD, 6mm (0.2") characters |
| Voltage Supply | 2.6 to 3.4 VDC | | 1.5V button cell 386 or SR43 battery, 3-4 year (supplied) |
| Power | 5 μ A typical, 10 μ A at 10k Hz (MicroCount I: 15 μ A) | | |
| Count input | 1) High speed solid state: Negative edge triggered 0.7 volt threshold, +18 VDC max. input, TTL and CMOS compatible. 2) (MicroCount II or IIR only) Slow speed non-voltage: Contact closure or open collector transistor | | Non-voltage: Contact closure, operates on contact open |
| Count speed | High speed solid state: 10k Hz max. rate (min. on/off time 50 μ sec.). Slow speed non -voltage: 30 Hz (min. on/off time 15mSec). | | 12 Hz max. |
| Direction | Add = logic 1, subtract = logic 0 (0V) | | |
| Reset | 1) Non-voltage: contact closure or open collector, TTL and CMOS compatible (min. pulse 15mSec). 2) Front push button: MicroCount IIR only | | Reset on insertion of battery |
| Housing | Clear polycarbonate plastic Black ABS bezel | Black polystyrene plastic | Clear polycarbonate plastic Black ABS bezel |
| Mounting | PC board or panel w/ bezel | PC board or surface mount | Panel mount w/ bezel |
| Connection | 5 PC board pins | 6 PC board pins | 2 Leads |
| Temperature | Operating: +14 to +140 °F / -10 to + 60 °C Storage: -14 to +158 °F / -20 to +70 °C | | Operating: +14 to +122 °F / -10 to + 50 °C Storage: -14 to +140 °F / -20 to +60 °C |
| Weight | 0.26 oz / 7.4 g | 0.5 oz / 14.2 g | 0.26 oz / 7.4 g |
| Approval | UL, CSA and CE | | CE |

Counter

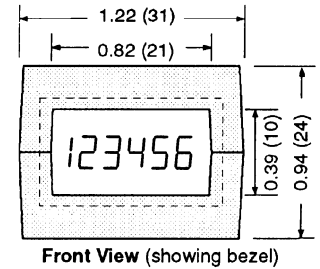
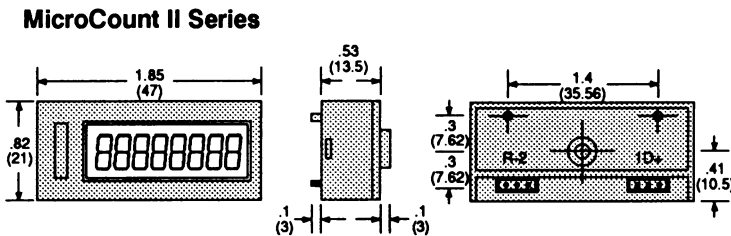
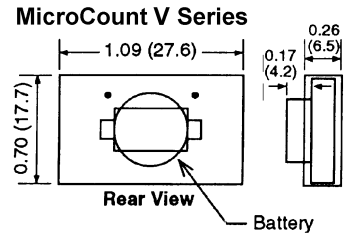
WIRING:



DIMENSIONS: inches (mm)



adaptor clips into panel .050 to .125 thick



Ordering information:

| Model | Description |
|-----------------|---------------------------------------|
| MicroCount I | Totalizer |
| MicroCount I/AS | Totalizer, add/subtract |
| MicroCount PMB | Panel mount bezel for MicroCount I |
| MicroCount II | Totalizer, add/subtract |
| MicroCount IIR | Totalizer, add/subtract, button reset |
| MicroCount V | Self powered totalizer with leads |